

BeltLine Corridor Environmental Study



BeltLine

Joint Agency Coordination and
Technical Advisory Committee Meeting

March 23, 2009

11:30AM – 1:00PM

Atlanta BeltLine, Inc.

86 Pryor Street, SW, Suite 200

Atlanta, GA 30303

Agenda & Introductions

- Opening
- Study Purpose
- Study Update
- Environmental Effects Report
- Evaluation Criteria
- Public Outreach Activities

Study Purpose

- Project Objectives:
 - Environmental review of Northeast (NE) quadrant for Georgia Environmental Policy Act (GEPA)
 - Right-of-way requirements identified for NE Quadrant
 - Tier 1 Environmental Impact Study (EIS) completed under National Environmental Policy Act (NEPA) for entire corridor



Study Purpose

Project Phasing

Phase 1

Project scoping
and initiation of
environmental
review processes

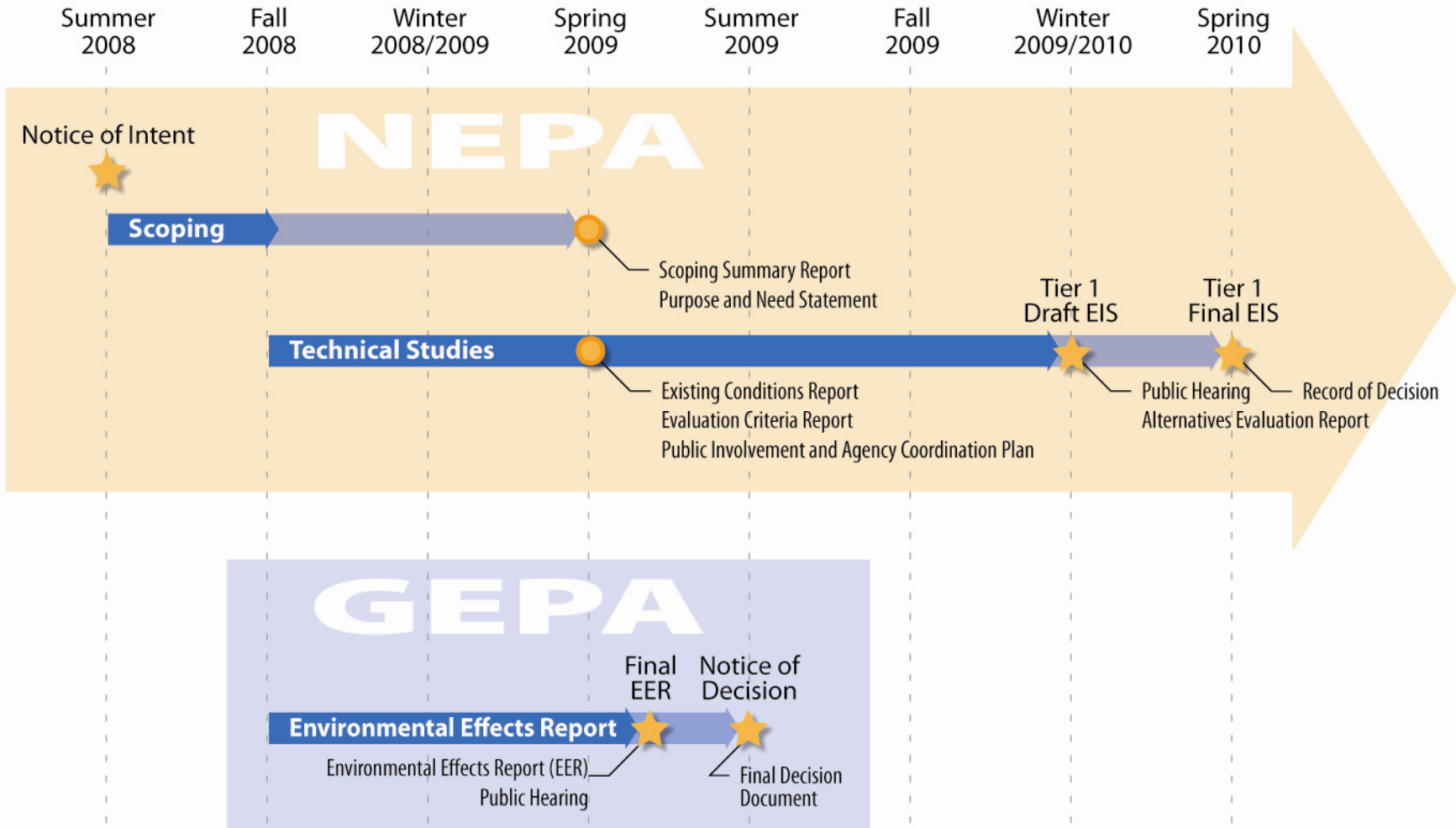
Phase 2

Complete
GEPA for
NE Quadrant

Phase 3

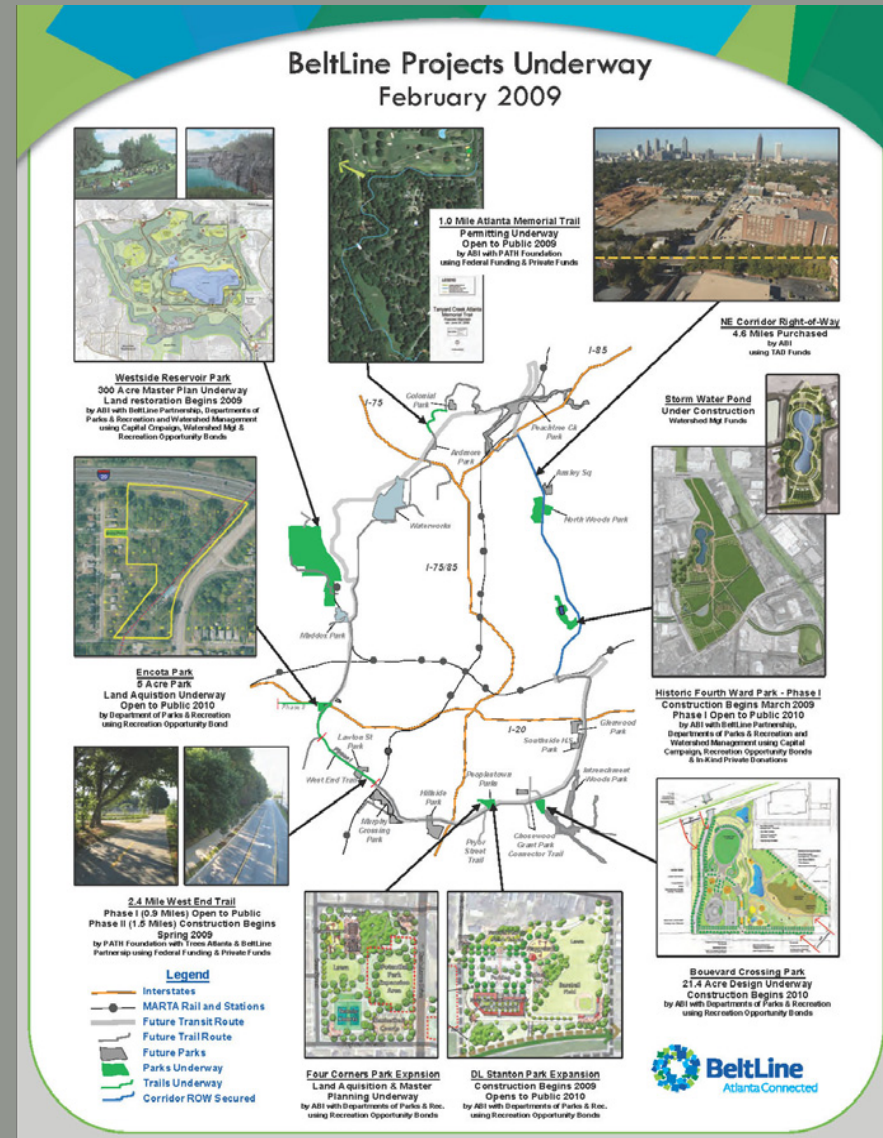
Complete Tier 1
EIS for entire
22-mile corridor

Study Update



Major BeltLine Accomplishments

- ✓ Initial Tax Allocation District (TAD) funding
- ✓ Master Plan preparation
- ✓ Key land parcel acquisition
- ✓ Parks and trails construction



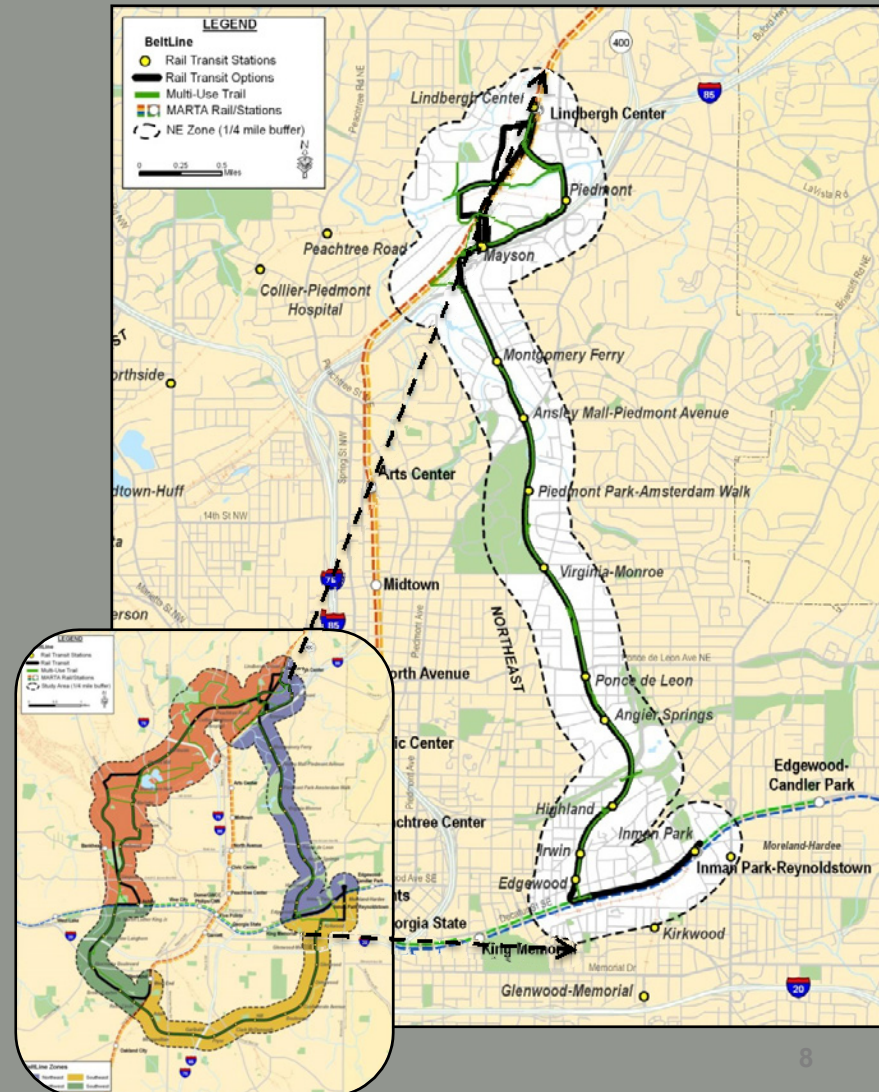
Environmental Effects Report (EER)

- GEPA requires EER for:
 - Land-disturbing activities
 - By state agencies / authorities (e.g., MARTA, ADA)
 - With significant adverse effects on environment
 - Applies to non-federal agency funds supporting land-disturbing projects



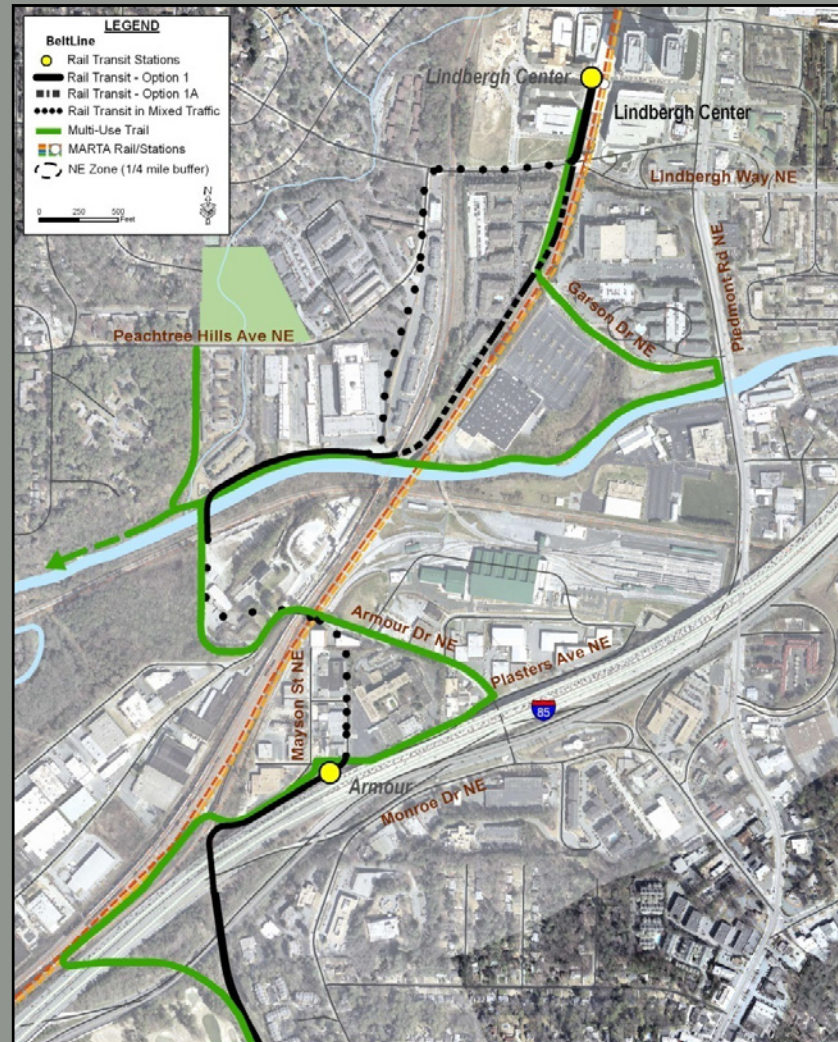
Environmental Effects Report (EER)

- Northeast Quadrant:
 - Inman Park/Reynoldstown to Lindbergh Center MARTA stations
 - Approximately 6.5 miles
 - At least 12 BeltLine stations
 - Includes Atlanta Development Authority (ADA) right-of-way
 - Includes 3 transit-and-trail alignment options north of Interstate 85



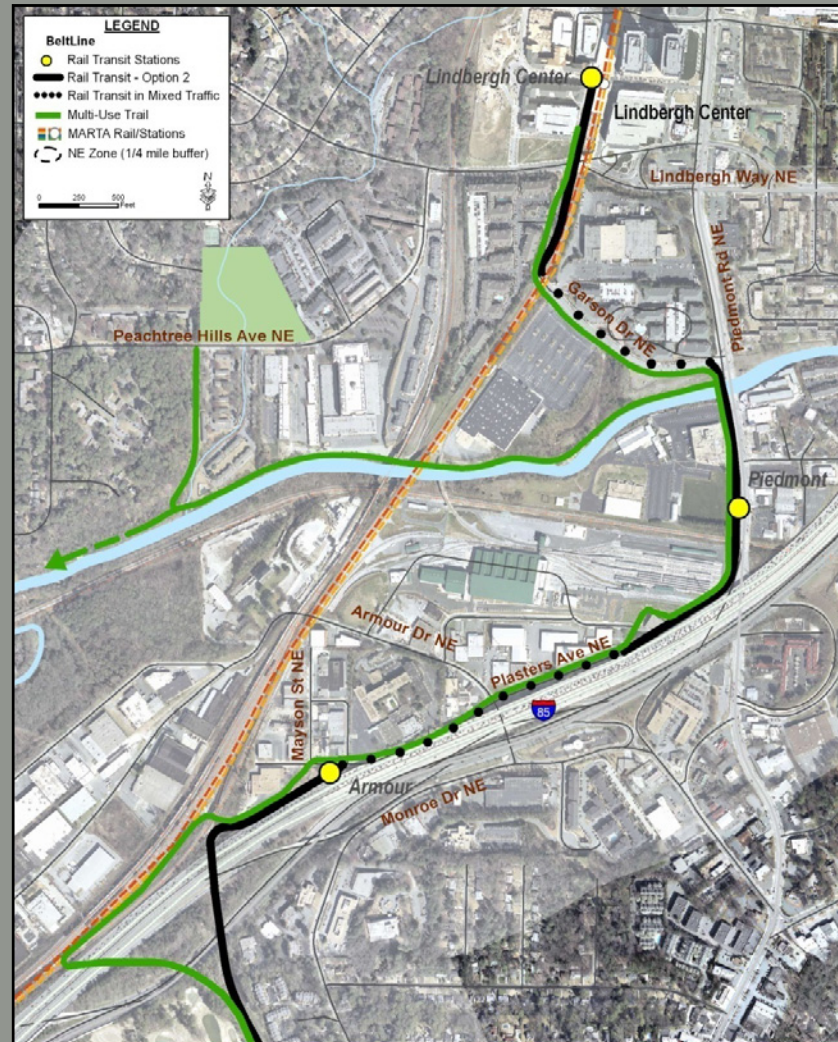
Environmental Effects Report (EER)

Transit-Trails Option 1 (and Transit Option 1A)



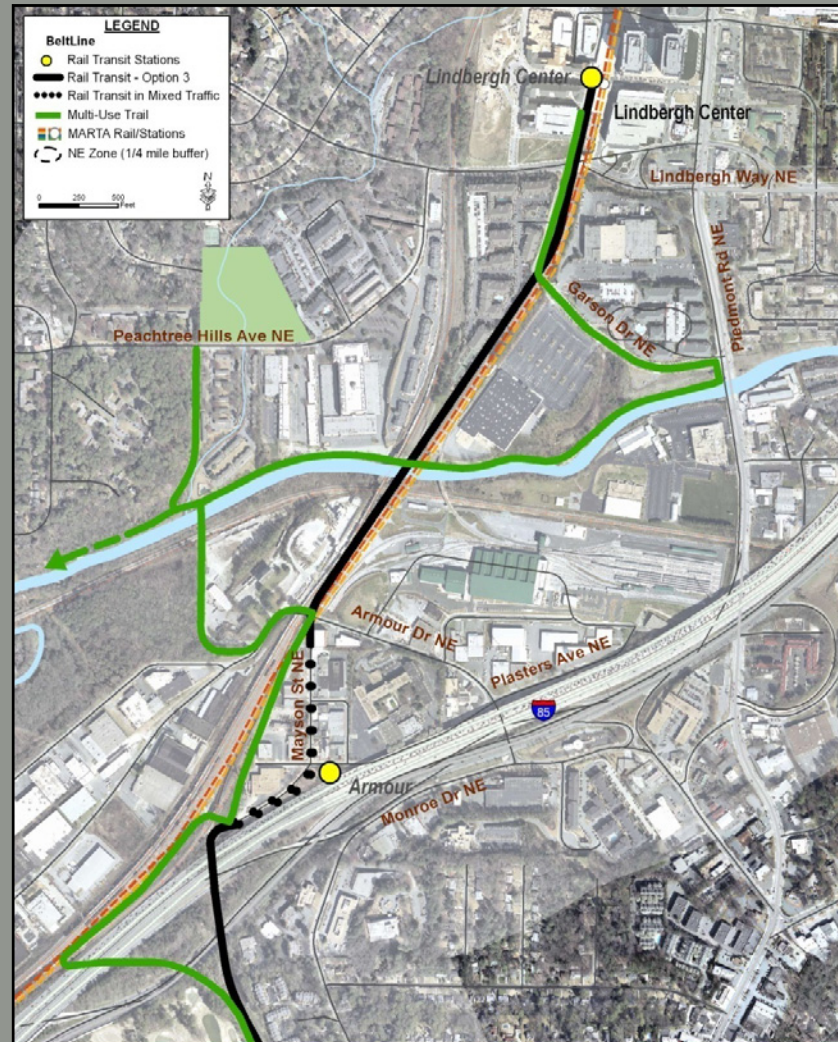
Environmental Effects Report (EER)

Transit-Trails Option 2



Environmental Effects Report (EER)

Transit-Trails Option 3



Environmental Effects Report (EER)

- Environmental Consequences:

Resource Types	Effects?	
	Minor	Major
Streams and Stream Buffers	X	
100-Year Floodplain	X	
Storm Water, Waste Water	X	
Solid Waste, Landfill Capacity	X	
Soil Stability/Erodibility	X	
Historic Resources	?	?
Archaeological Resources	X	
Parks, Recreation Facilities	X	
Energy Supplies	X	
Hazardous Materials, Brownfields	X	

For unavoidable, “minor effects”:

- Identify minimization and mitigation strategies
- Comply with federal, state and/or local requirements during design and construction
- Coordinate with stakeholder agencies

Even with mitigation, effects are potentially significant and adverse

No alignment option completely avoids environmental effects

Environmental Effects Report (EER)

Historic Resources Survey (under review with State Historic Preservation Office, SHPO)

Preliminary findings – areas of potential effect include:

- 39 Historic Resources within the study area:

- 10 Listed

- 8 Historic Districts
 - Oakland Cemetery
 - Piedmont Park



- 29 Eligible

- 12 Historic Districts
 - 17 Additional Resources...



Environmental Effects Report (EER)

The Additional eligible resources:

- 15 Additional buildings/structures
- 2 Multiple-property listings:
 - *Historic Resources of the Atlanta BeltLine Northeast Quadrant*
(Armour and Hulsey Yards, Southern Railway Corridor, Highland Avenue former terminal, 3 Structures crossing Clear Creek, 11 GDOT bridges)
 - *Atlanta's Historic Apartment Complexes*
(5 locations in Peachtree Hills and Ponce de Leon/ Midtown areas)



Environmental Effects Report (EER)

Assessing Effects to Historic Resources

- Examples of Adverse Effects:
 - Removing properties from their historic locations
 - Modifying the character of the property's use
 - Modifying features contributing to a property's significance
- Potentially affected BeltLine resources:
 - Bridge structures
 - Rehabilitation
 - Reconstruction to accommodate right-of-way
 - Modifications for disabled access
 - Existing railbed



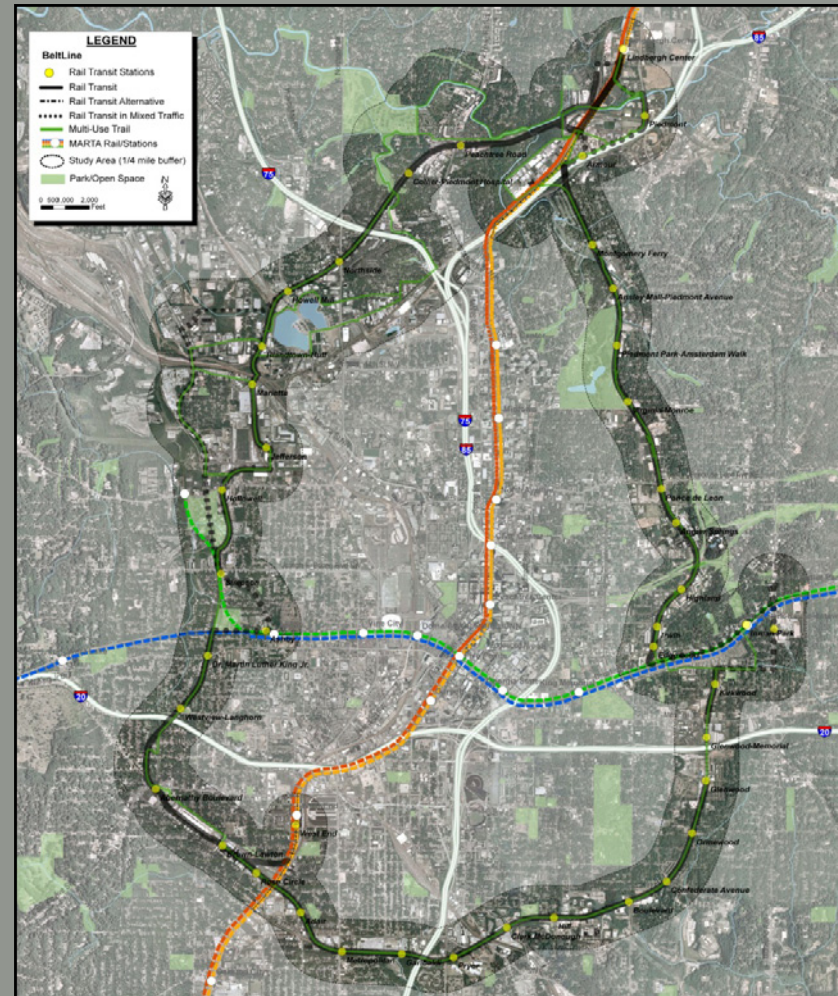
Environmental Effects Report (EER)

- Schedule:
 - Field Investigations and Technical Analyses *Complete*
 - Interagency Consultation *Ongoing*
 - EER Preparation *Ongoing*
 - EER Public Notice *April 2009*
 - EER Public Hearing *May 14, 2009*
 - Final Decision Document *June 2009*

Evaluation Criteria Exercise

Evaluation Criteria

- Basis for comparing alternative alignments and technologies
- Performance measures for each project goal
- Assessment of the range of alternatives alignments and technologies through the listed criteria:



Evaluation Criteria

- Breakout discussions of evaluation criteria:

- Mobility
- Accessibility and Connectivity
- Equity
- Cost Effectiveness and Efficiency
- Travel Time
- Pedestrian and Bicycle Compatibility
- Support of Other Planning Initiatives



- Land Use and Economic Development
- Community Fit
- Environmental Quality
- Public Input

Public Outreach Activities

Upcoming Meetings

- April 2nd Citywide Conversation on Transit and Trails



Upcoming Public Workshop

- Review the transit and trails concept and features
- Refine alternatives considered in Tier 1 EIS
- Identify key concerns to address in the impact analysis



Upcoming Public Workshop

- Open house with video display
- Presentation on purpose
- Breakout groups to review and refine alternatives
- Summary of key results from groups
- Next steps



Upcoming Public Workshop

Five meetings (one for each of the BeltLine Study Groups)

- April 13th Southeast
- April 16th Northeast
- April 23rd Southwest
- April 27th Westside
- May 4th Northside



Upcoming Meetings

- May 14th Public Hearing on the Environmental Effects Report

